



HORIZONTAL BOILER FEED TANKS & SYSTEMS

**Large, Small or In-between...
Standard or Custom Models...**



Shown is a 150 Gallon 30 X 48 All Stainless Steel syphon triplex with optional control panel and insulation with aluminum shield.

EXCEPTIONAL VALUE, EXTRAORDINARY QUALITY

Aero horizontal boiler feed tanks & systems are available in stainless steel or carbon steel, simplex, duplex, and triplex configurations with siphon or non-siphon make-up inlets, 15 to 350 boiler horsepower. All of Fabtek Aero's horizontal tanks and systems have the following features:

Superior NPSH - Elevated tanks on tall rugged stands help to give pumps long, dependable life under demanding conditions.

Ergonomic Design - All piping is easily accessible from the sides of the tank. Sight gauge and thermometer are standard and are mounted on the front of the tank for high visibility.

Piping - All pump suction piping includes a strainer and isolation valve, as well as a union for ease of pump service.

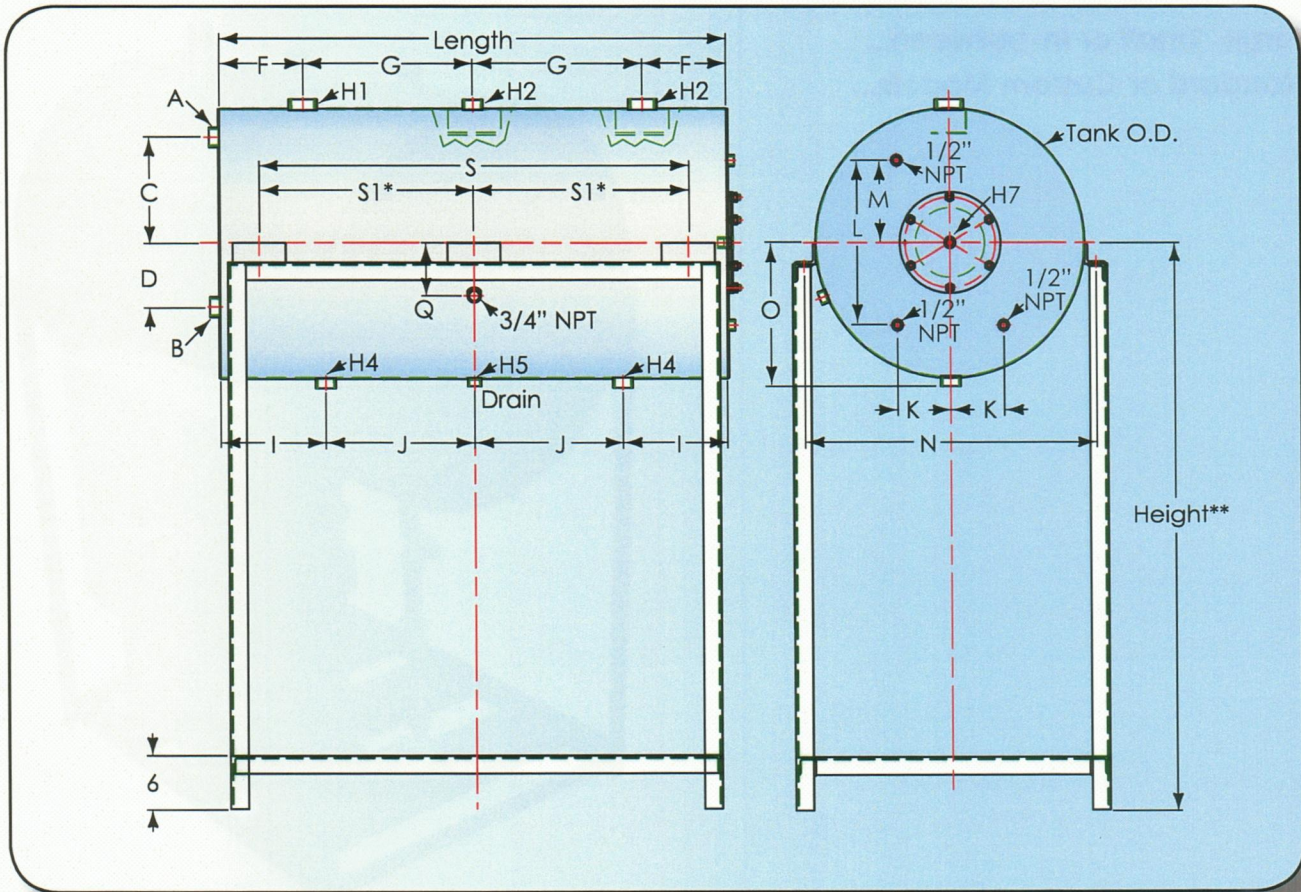
Optional Control Panel - Available for duplex and triplex units, automatically alternates pumps every cycle for even pump wear, or shut down one pump for service.

Stainless Steel Systems - Tanks are made of 12 gauge up to 100 Gallons, then 10 gauge for 150 Gallons and above. Stand is painted carbon steel.

Carbon Steel Systems - Tanks are made of 11 gauge up to 100 gallons, then 3/16" for 150 Gallons and above. Strainer is cast iron with a stainless steel screen. Make-up valve and sight glass are bronze.



HORIZONTAL TANK & STAND DIMENSIONS



| Tank Size | Tank OD | Width | Height** | Length | A | B | C | D | F | G | H1 | H2 | H4 | H5 | H7 |
|-----------|---------|--------|----------|--------|-------|-------|--------|---|----|----|-------|-------|-------|-----|-----|
| 60 | 23 | 27 5/8 | 52 1/8 | 36 | 1 1/4 | 1 1/4 | 10 1/8 | 6 | 6 | 12 | 2 | 1 1/2 | 1 1/2 | 3/4 | 1/2 |
| 80 | 23 | 27 5/8 | 52 1/8 | 46 | 1 1/4 | 1 1/4 | 10 1/8 | 6 | 7 | 16 | 2 | 1 1/2 | 2 1/2 | 3/4 | 1/2 |
| 100 | 25 3/4 | 29 7/8 | 59 | 48 | 1 1/4 | 1 1/4 | 10 3/4 | 7 | 8 | 16 | 2 | 1 1/2 | 2 1/2 | 3/4 | 3/4 |
| 150 | 30 3/4 | 35 1/4 | 61 5/8 | 48 | 2 | 2 | 13 3/8 | 8 | 8 | 16 | 2 | 1 1/2 | 2 1/2 | 1 | 3/4 |
| 200 | 32 | 38 5/8 | 69 | 60 | 2 | 2 | 13 | 8 | 12 | 18 | 2 1/2 | 1 1/2 | 2 1/2 | 1 | 3/4 |
| 250 | 32 1/2 | 39 1/8 | 69 1/4 | 72 | 2 | 2 | 13 | 8 | 18 | 18 | 2 1/2 | 1 1/2 | 2 1/2 | 1 | 3/4 |
| 300 | 36 1/4 | 36 | 71 | 72 | 2 | 2 | 15 1/2 | 9 | 18 | 18 | 2 1/2 | 2 | 2 1/2 | 1 | 3/4 |

| Tank Size | I | J | K | L | M | N | O | Q | S | S1* |
|-----------|----|----|---|--------|-------|--------|--------|---|--------|--------|
| 60 | 9 | 9 | 4 | 15 1/2 | 7 3/4 | 25 1/8 | 9 1/2 | 5 | 28 3/4 | --- |
| 80 | 11 | 12 | 4 | 15 1/2 | 7 3/4 | 25 1/8 | 9 1/2 | 5 | 38 1/2 | --- |
| 100 | 10 | 14 | 5 | 15 1/2 | 7 3/4 | 27 1/2 | 10 3/4 | 5 | 40 1/2 | --- |
| 150 | 10 | 14 | 6 | 24 | 12 | 32 7/8 | 10 1/2 | 6 | 41 | 20 1/2 |
| 200 | 15 | 15 | 6 | 26 | 13 | 34 1/8 | 14 | 6 | 52 | 26 |
| 250 | 12 | 24 | 6 | 26 | 13 | 34 1/2 | 14 1/4 | 6 | 24 | 27 |
| 300 | 12 | 24 | 7 | 26 | 13 | 38 1/8 | 16 | 7 | 60 | 30 |

*S1 - 60, 80, 100 GALLON TANKS ONLY HAVE TWO MOUNTING BRACKETS. ALL OTHERS HAVE THREE.
 **CUSTOMIZABLE FOR SHORTER OR TALLER HEIGHT

