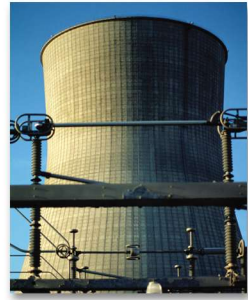


# Tonkaflo® Pumps

**A Strong Brand Name. A Stronger Product.**

GE Osmonics began production of Tonkaflo pumps in 1977 when other mass production pump manufacturers were not developing the right high pressure pump for reverse osmosis and other water treatment applications. We asked, why settle for a pump that almost met our needs? So we decided to build our own. Today, wherever you find an application requiring consistent, non-pulsating centrifugal flow, you are sure to find the name Tonkaflo.



## Why buy Tonkaflo?

**Dependability.** Our customers purchase a multi-stage Tonkaflo pump because they don't want to think about it after installation. The Tonkaflo's reliable, no-fuss performance has satisfied thousands of customers for over 25 years.

### Web-Based Tools

GE Osmonics provides its customers with an online catalog on [www.tonkaflo.com](http://www.tonkaflo.com) as well as the pump selection site, [www.pumptools.com](http://www.pumptools.com). You have instant access to drawings, CAD symbols, options and prices.

### Precision Engineering

Our pumps are conservatively designed for reliable operation, but offer important energy saving designs with up to 78% efficiencies and the ability to customize the number of stages built in each pump.

### Support

Our in-house rebuild program provides fast replacement of your pump - within 24 hours if required.

### Delivery

We deliver over 2,000 pumps per year to our customers with high on-time ratings and short delivery schedules.

### Broad Range of Products

We have three pump series which include approximately 200 models. We offer a host of pump configurations, ensuring a pump perfect for your application.

### Assistance

Our network of 200 worldwide pump experts ensure your questions are always answered, 24 hours a day, 7 days a week.

# Which Tonkaflo is right for you?

**AS, SS, and QS Pumps**

Your fluid may require special chemical compatibility. Your application may dictate value as a top priority. Or perhaps your work setting demands quieter operation. No matter what you're looking for, you will find it in our line of durable pumps. Visit [www.tonkaflo.com](http://www.tonkaflo.com) or [www.pumptools.com](http://www.pumptools.com) for more detailed pump specifications.

## Tonkaflo SS Series Pumps

Offering the broadest range and best value, the SS Series sets the standard for the RO industry—and serves as the standard for all Tonkaflo pumps.



### Feature and Benefits

- 4-inch (101.6 mm) and 6-inch (152.4 mm) 316 stainless steel (SS) shells, inlets and outlets
- Flow Capacity of 1.5 to 300 gpm (.34 to 68.10 m<sup>3</sup>/h)
- Pressures up to 700 psi (48.3 bar)
- Noryl plastic stages
- Maximum operating temperature 125°F



*K-Bearing frame for ease of maintenance*



*CIP or transfer pump*



*Parallel pumps for higher flow rates*

# Tonkaflo QS Series Pumps

The QS Series offers reliable boost in applications where quiet or non-ventilated operation is required. This sleek design and integrally mounted water cooled motor deliver consistent performance for a variety of applications. This in-line pump is ideal for systems used in dialysis clinics where the noise level is low, it can be used only inches away from the patient.



*Two-Pass pharmaceutical RO*



*Separate motor and pump modules for easy maintenance*



### Feature and Benefits

- 4-inch 316 SS shell, inlets and outlets
- Noryl plastic stages
- Integral water-cooled motor
- Vertical mount for easy and compact installation
- Flow capacity of 6 to 40 gpm (1.4 to 9.1 m<sup>3</sup>/h)
- Pressures up to 300 psi (20.7 bar)
- Modular two-piece design for ease of maintenance
- Maximum operating temperature 125°F



*RO unit for hemodialysis*

# Tonkaflo AS Series Pumps

The AS Series offers a full range of models for applications that require rugged metal construction, higher temperatures, or chemical compatibility. AS stands for All Stainless Steel construction.

## Feature and Benefits

- 4-inch (101.6 mm) and 6-inch (152.4 mm) 304/316 SS shells, inlets and outlets
- 304 SS stages
- Flow capacity of 1.5 to 500 gpm (.34 to 113.5 m<sup>3</sup>/h)
- Pressures up to 575 psi (39.7 bar)
- Maximum operating temperature 125°F

# Instant Pump Design

@ [www.pumptools.com](http://www.pumptools.com)

Access Tonkaflo® PumpTools™ online for a quick, easy and painless selection of Tonkaflo pump products available free to everyone with internet access at [www.pumptools.com](http://www.pumptools.com). Now people in the water treatment industry around the world can enjoy the benefits of Tonkaflo pump selection online.

- Accurate and current information! Online price list, drawings, and pump specifications are continuously updated
- No need to print or fax reports since each PumpTools selection report may be distributed via e-mail
- No need to memorize product specifications since users can save up to eight Tonkaflo product selections for same-day comparison

A time-saving feature of PumpTools online enables engineers or drafters to download product CAD symbols in 2 or 3D directly into their own drawings.

Users may enter operating parameters, including flow rate, pressure and temperature, and the "Pump Wizard" will find the appropriate Tonkaflo product in seconds, including pumps for 50 and 60 Hz operation. Those familiar with the Tonkaflo product line may use the pump search feature and type in all or a portion of the product number for an instant selection report.

Visit our website [www.pumptools.com](http://www.pumptools.com) to obtain technical information on more than 700 pump products and to personally configure a pump for your application!



TONKAFLO®  
PUMPTOOLS™

For More Information:  
Call GE Osmonics at (800) 848-1750 or (952) 933-2277, visit [www.osmonics.com](http://www.osmonics.com), or e-mail [custhelp@osmonics.com](mailto:custhelp@osmonics.com)

North America Sales  
5951 Clearwater Drive  
Minnetonka, MN  
55343-8995  
USA  
(952) 933-2277 Phone  
(952) 933-0141 Fax

Euro/Africa Sales  
230 rue Robert Schuman  
ZA des Uselles  
F-77350 Le Mée sur Seine  
FRANCE  
+33 1 64 10 2000 Phone  
+33 1 64 10 3747 Fax

Asia/Pacific Sales  
1044/8 SOI 44/2  
Sukhumvit Road Prakanong  
Bangkok 10110  
THAILAND  
+66 2 38 14213 Phone  
+66 2 39 18183 Fax

GE Osmonics Headquarters: 5951 Clearwater Drive, Minnetonka, MN 55343-8995 • (952) 933-2277 Phone

© Copyright 2003 GE Osmonics  
Printed in USA, P/N 1160526 Rev E



# TONKAFLO

AS, SS, and QS Pumps



OVERVIEW



AS 40K for high flow RO units



Chemically compatible transfer pumps



High temperature RO applications